

Chesterfield Village II

16052 Swingley Ridge Rd | Chesterfield, MO

Available SF: 8,018 | Lease Rate: 25 | Lease Terms: Gross Full Service

ALLIANCESTL
an initiative of Greater St. Louis, Inc.



Property and Area Description

• Class A, 48,000-SF, 3-Story Office Building • Building Renovations Including New Lobby, Hallways, Restrooms & Exterior Enhancement to be Completed by Summer 2020 • Shared Tenant Amenities Include: - Conference/Training Room Seating up to 50 People - Fitness Center & Studio with Shower Facility - Tenant Lounge - Self-Serve Fresh Food Market • Easy Access to Hwy. I-64/40

Population



2,012,462
25 Mile Radius

2,825,299
50 Mile Radius

3,211,272
75 Mile Radius

Source: ESRI®, 2020

Households



811,463
25 Mile Radius

1,132,189
50 Mile Radius

1,280,946
75 Mile Radius

Source: ESRI®, 2020

Building Type:	Office
Available SF:	8,018
Total SF:	49,410
Number of Stories:	3
Expandable:	
Site Size:	3.29 Acres
Year Built:	1988
Can Subdivide:	
Within City Limits:	
Lease Rate:	25
Lease Terms:	Gross Full Service
Last Updated:	Nov 10, 2020

Realtor/Owner Contact

Property Images



SUITE 310: 8,018 SF

Labels in floor plan: CONFERENCE 28'11" x 33'9", SMALL CONF. RM 11'7" x 12'4", LOBBY 18'0" x 14'1", WORK 17'9" x 22'7", RECEPTION 14'7" x 10'2", TELE. ELEC. CLOSET, BREAK 24'7" x 11'7", OFFICE 13'7" x 10'0", OFFICE 12'7" x 10'0", OPEN OFFICE 38'11" x 10'0", OFFICE 10'0" x 11'7", OFFICE 10'0" x 11'7", OFFICE 10'0" x 11'7", OFFICE 12'0" x 12'0", OFFICE 12'0" x 12'0", OFFICE 12'0" x 12'0", OFFICE 12'0" x 12'0", OFFICE 12'0" x 12'0", OFFICE 12'0" x 12'0", OFFICE 12'0" x 12'0", OFFICE 12'0" x 12'0", OFFICE 12'0" x 12'0", OFFICE 12'0" x 12'0", OFFICE 12'0" x 12'0

Logos: Gershman, Burk-Hill

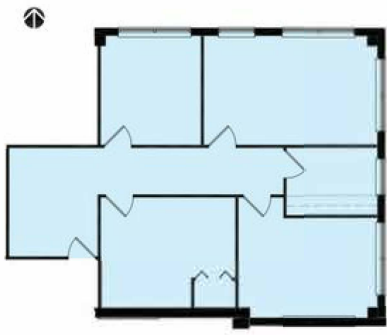
SUITE 210: 3,864 SF

Logos: Gershman, Burk-Hill

SUITE 205: 2,726 SF

Logos: Gershman, Burk-Hill

SUITE 130: 1,237 SF



Jim Alexander | Senior Vice President | AllianceSTL
One Metropolitan Square | St. Louis, MO 63102 | (314) 444-1135 | jalexander@alliancestl.com